

UNIT 1109

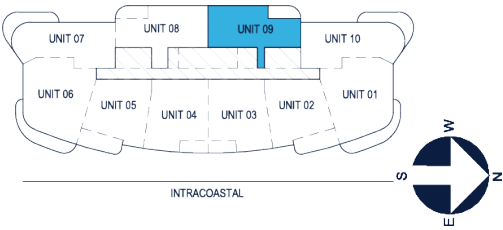
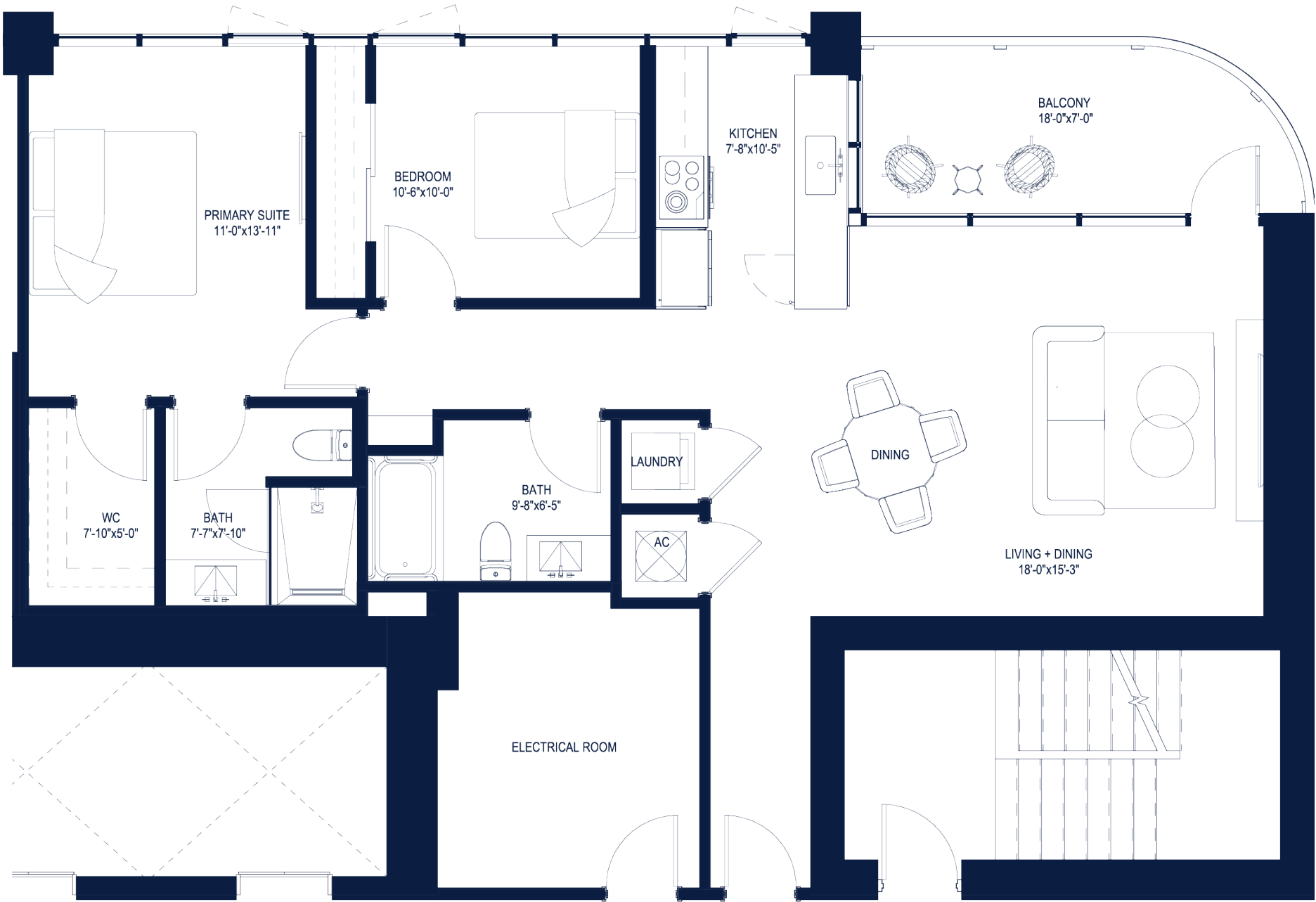
2 BEDROOMS

2 BATHROOMS

1,118 SF
INTERIOR

115 SF
EXTERIOR

1,296 SF
TOTAL



DEVELOPED BY: CLARIDGE HOMES (3000 WATERSIDE) LP EXCLUSIVE SALES & MARKETING: S&B REALTY PROPERTY ADDRESS: 3000 OAKLAND PARK BOULEVARD, FORT LAUDERDALE, FLORIDA 33306 TELEPHONE: 954.994.2450 EMAIL: SALES@3000WATERSIDE.COM WEBSITE: 3000WATERSIDE.COM

ORAL REPRESENTATIONS CANNOT BE RELIED UPON AS CORRECTLY STATING REPRESENTATIONS OF THE DEVELOPER. FOR CORRECT REPRESENTATIONS, MAKE REFERENCE TO THIS BROCHURE AND THE DOCUMENTS REQUIRED BY SECTION 718.503, FLORIDA STATUTES, TO BE FURNISHED BY A DEVELOPER TO A BUYER OR LESSEE. 🏠

The dimensions stated for this unit floor plan are approximate because there are various recognized methods for calculating the square footage of a unit. The square footage stated here is calculated from the exterior boundaries of the exterior walls to the centerline of interior demising walls without deductions for cutouts, curves, or architectural features. This method typically results in quoted dimensions greater than the dimensions that would be determined by using other accepted methods. The definition of "Unit" and the calculation method to be relied upon is set forth by the Developer in Developer's prospectus and the method set forth in the Developer's prospectus may result in a square footage calculation less than the method used here. Dimensions and unit configuration may change during construction. Consult the Developer's prospectus to understand what is offered with purchase, the calculation of the Unit square footage and dimensions. Prices are not based on the square footage no matter the method of calculation of unit dimensions and all prices are subject to change at any time. The project graphics, renderings, photographs, and text provided herein are copyrighted works owned by Claridge Homes (3000 Waterside) L.P. 2025.