



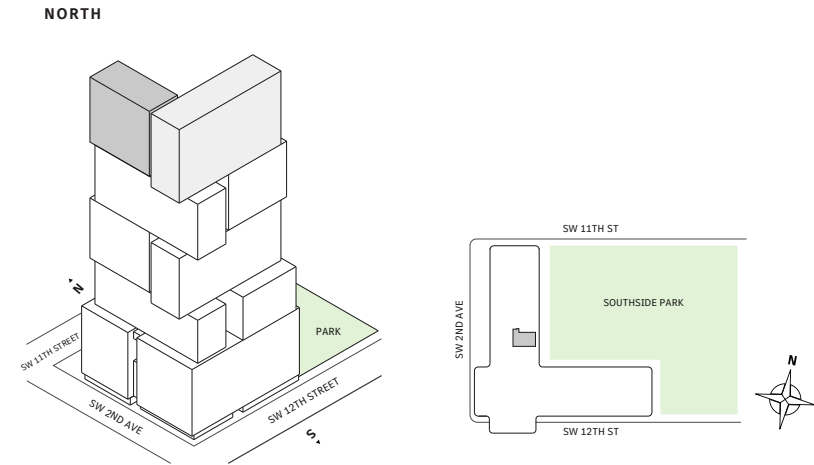
# Residence 04

FLOOR 52

- North tower
- 1 Bedroom
- 1 Bathroom
- Powder Room
- Interior: 836 sq ft
- Terrace: 899 sq ft

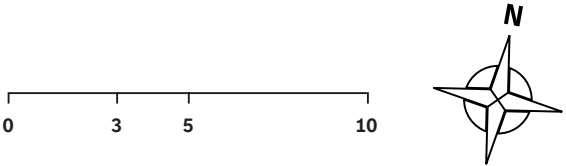
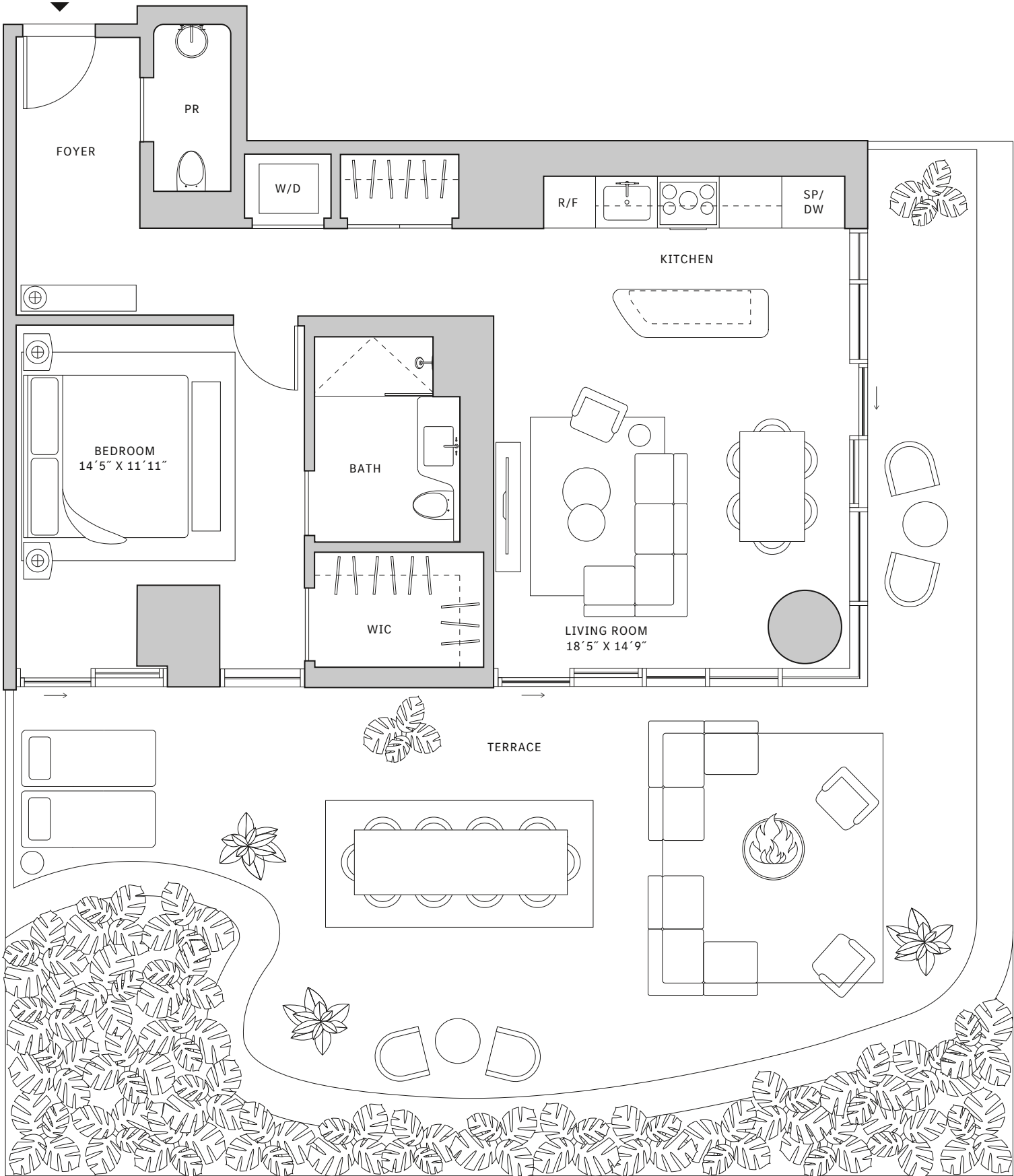
FEATURES

- Corner one-bedroom residence with South and East exposure overlooking Southside Park
- 10' floor-to ceiling windows and slinding glass doors with direct access to an expansive terrace



MIAMI.MERCEDESBNZPLACES.COM

Developed by JDS DEVELOPMENT GROUP  
Exclusive Sales & Marketing by SERHANT. NEW DEVELOPMENT



STATED DIMENSIONS ARE MEASURED TO THE EXTERIOR BOUNDARIES OF THE EXTERIOR WALLS AND THE CENTERLINE OF INTERIOR DEMISING WALLS AND IN FACT VARY FROM THE DIMENSIONS THAT WOULD BE DETERMINED BY USING THE DESCRIPTION AND DEFINITION OF THE "UNIT" SET FORTH IN THE DECLARATION (WHICH GENERALLY ONLY INCLUDES THE INTERIOR AIRSPACE BETWEEN THE PERIMETER WALLS AND EXCLUDES INTERIOR STRUCTURAL COMPONENTS), FOR YOUR REFERENCE, THE AREA OF THE UNIT, DETERMINED IN ACCORDANCE WITH THOSE DEFINED UNIT BOUNDARIES, IS SET FORTH IN EXHIBIT 3 TO THE DECLARATION OF THE CONDOMINIUM. NOTE THAT MEASUREMENTS OF ROOMS SET FORTH ON THIS FLOOR PLAN ARE GENERALLY TAKEN AT THE GREATEST POINTS OF EACH GIVEN ROOM (AS IF THE ROOM WERE A PERFECT RECTANGLE), WITHOUT REGARD FOR ANY ANY CUTOUTS. ACCORDINGLY, THE AREA OF THE ACTUAL ROOM WILL TYPICALLY BE SMALLER THAN THE PRODUCT OBTAINED BY MULTIPLYING THE STATED LENGTH TIMES WIDTH. ALL DIMENSIONS ARE APPROXIMATE AND MAY VARY WITH ACTUAL CONSTRUCTION, AND ALL FLOOR PLANS AND DEVELOPMENT PLANS ARE SUBJECT TO CHANGE. THIS ADVERTISEMENT IS MADE PURSUANT TO COOPERATIVE POLICY STATEMENT #12, FILE NO. CP24-0025, ISSUED BY THE NEW YORK STATE DEPARTMENT OF LAW. THE COMPLETE OFFERING TERMS ARE IN A PROSPECTUS AVAILABLE FROM OFFEROR. OFFEROR: 191 SW 12 OWNER LLC, 120 NE 27TH STREET, STE. 200, MIAMI, FL 33137.